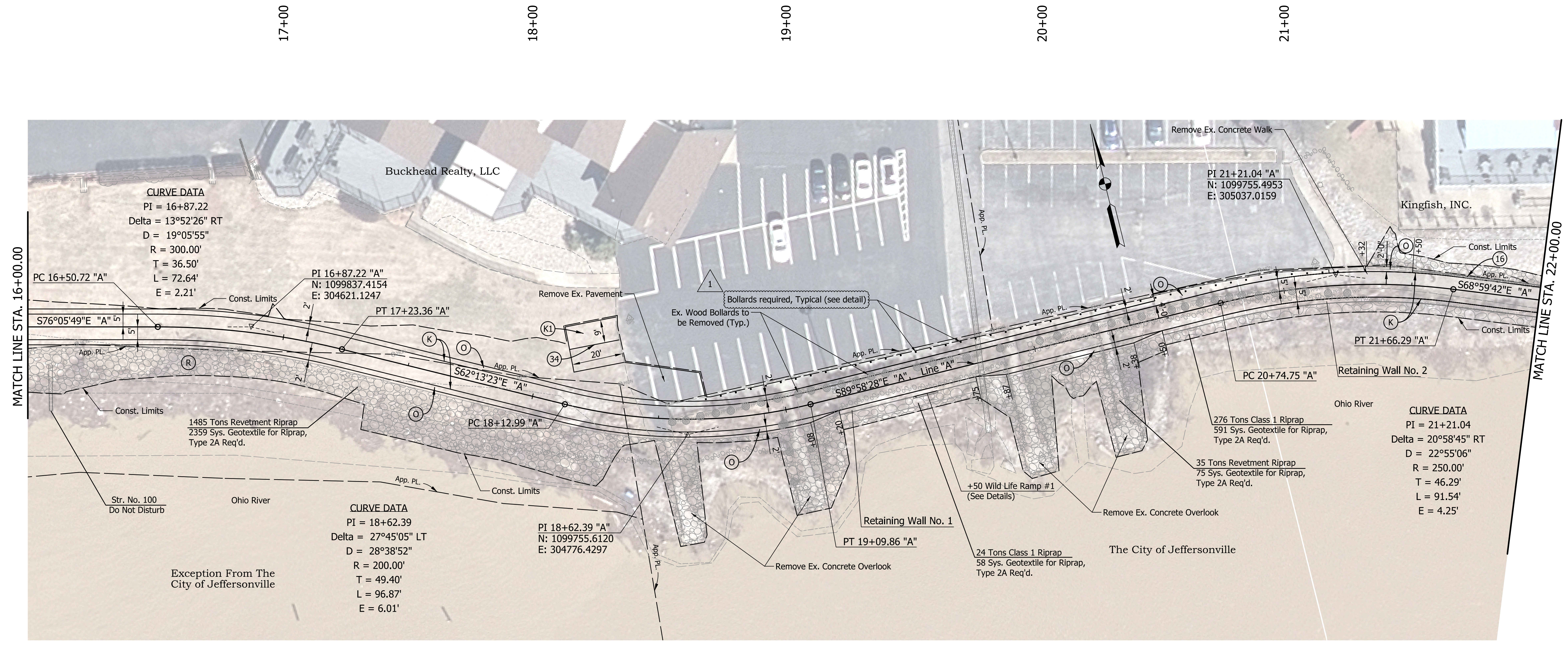
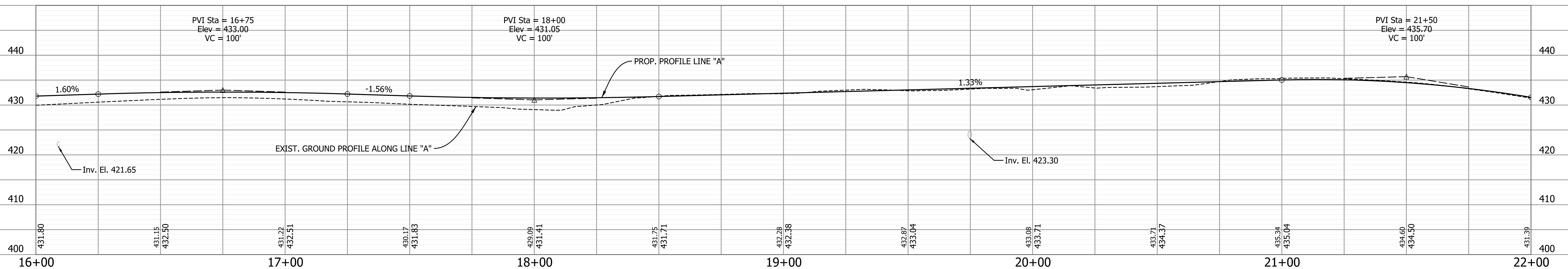


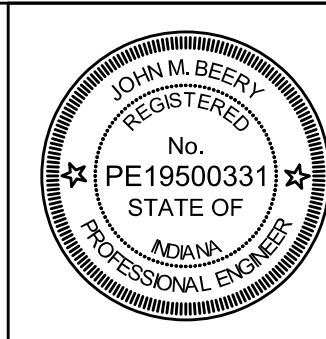
1/8/2025 1:19:56:58 AM I:\230005-City of Jeffersonville-Ohio River Greenway-Trail Design\09Road\04\_Design\_files\02\_DGN\Plans\230005\_07\_Sht\_A\_PP\_02.dgn



All Removal Items Shall be Removed Incidental to Clearing Right of Way and Structures and Obstructions, Remove



Revision #1 - 1-8-24



RECOMMENDED FOR APPROVAL: *John Beery*  
 DESIGN ENGINEER 12/20/2024 DATE

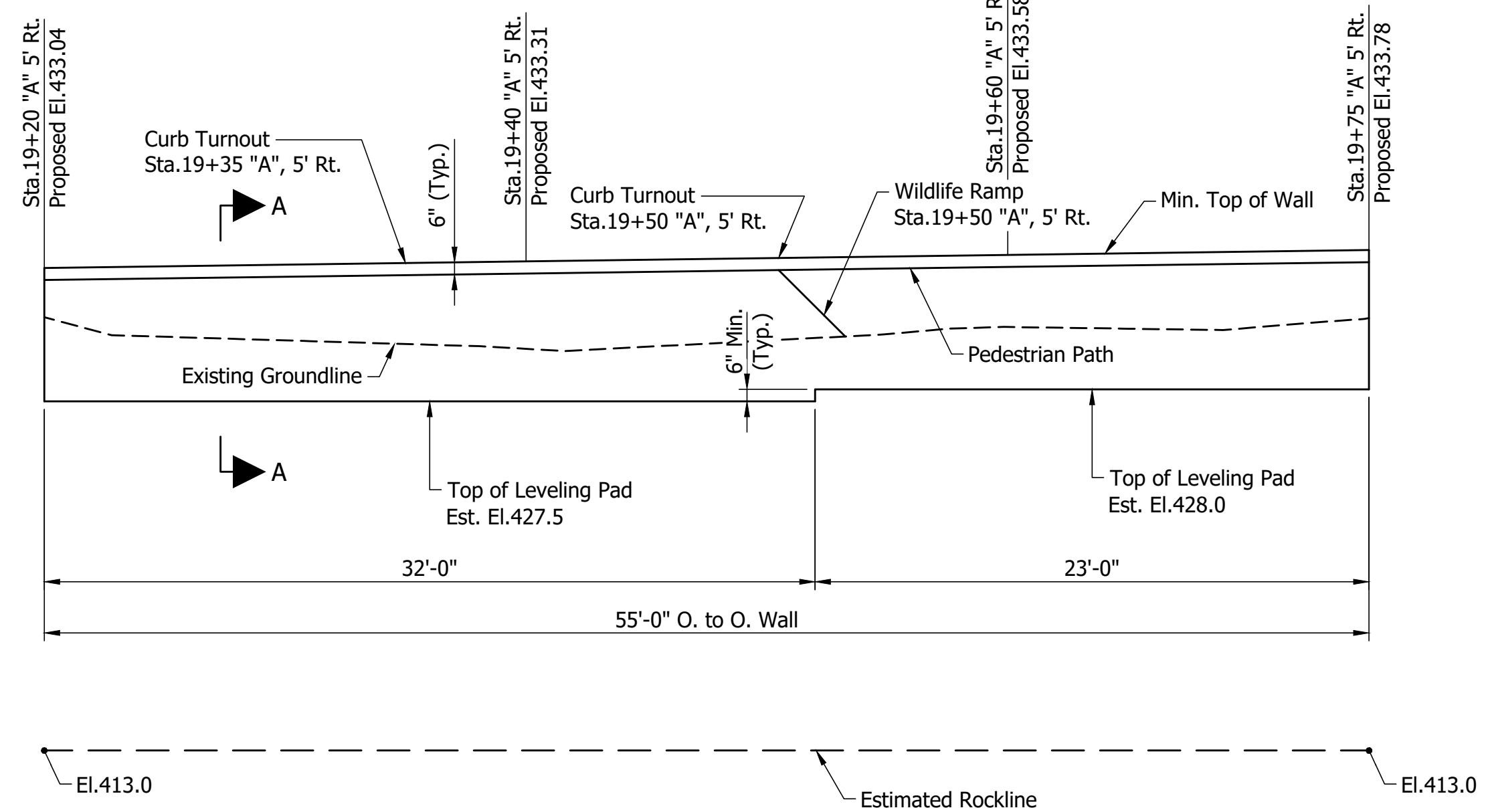
DESIGNED: HMM DRAWN: JJP  
 CHECKED: JMB CHECKED: HMM

CITY OF JEFFERSONVILLE

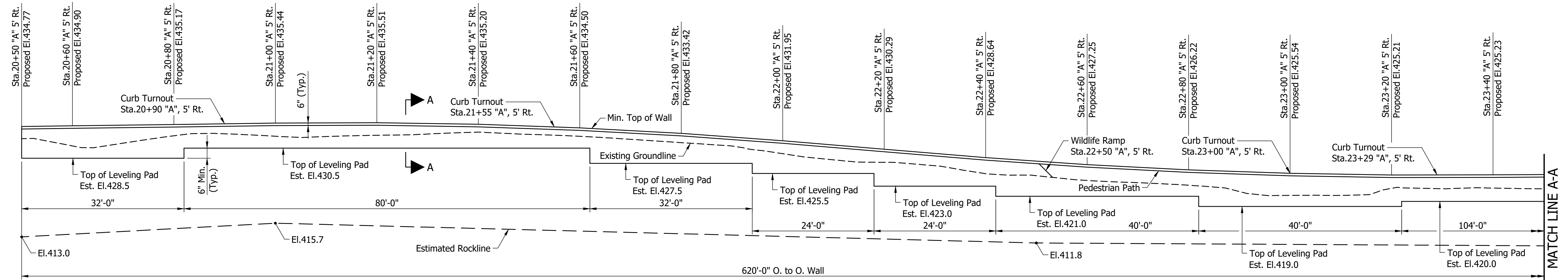
PLAN & PROFILE  
 STA. 16+00.00 TO STA. 22+00.00 LINE "A"

HORIZONTAL SCALE 1"=20'	BRIDGE FILE N.A.
VERTICAL SCALE 1"=10'	DESIGNATION N.A.
SURVEY BOOK ELECTRONIC	SHEETS 7 of 42
CONTRACT N.A.	PROJECT 230005

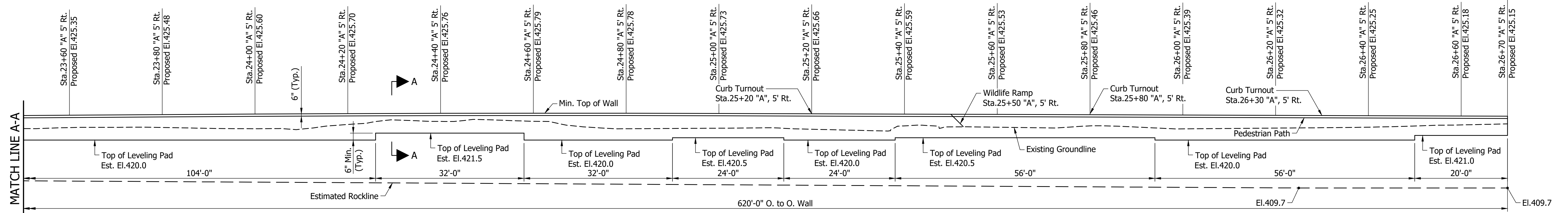
Notes:  
 Handrailing omitted for clarity.  
 Omit Architectural Treatment for width of curb turnout.  
 For Section A-A and Architectural Treatment Details, see Sht.8.  
 For Wildlife Ramps and Curb Turnout Details, see Sht.3 & Sht.15.



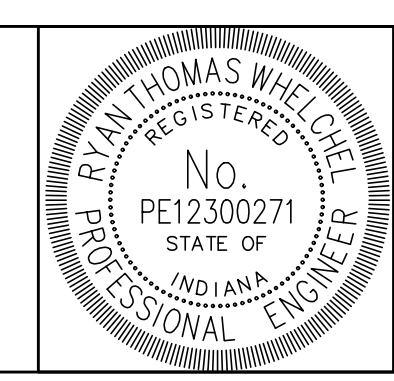
**RETAINING WALL NO.1 ELEVATION**  
 Scale: 3/16" = 1'-0"



**RETAINING WALL NO.2 ELEVATION**  
 Scale: 3/32" = 1'-0"



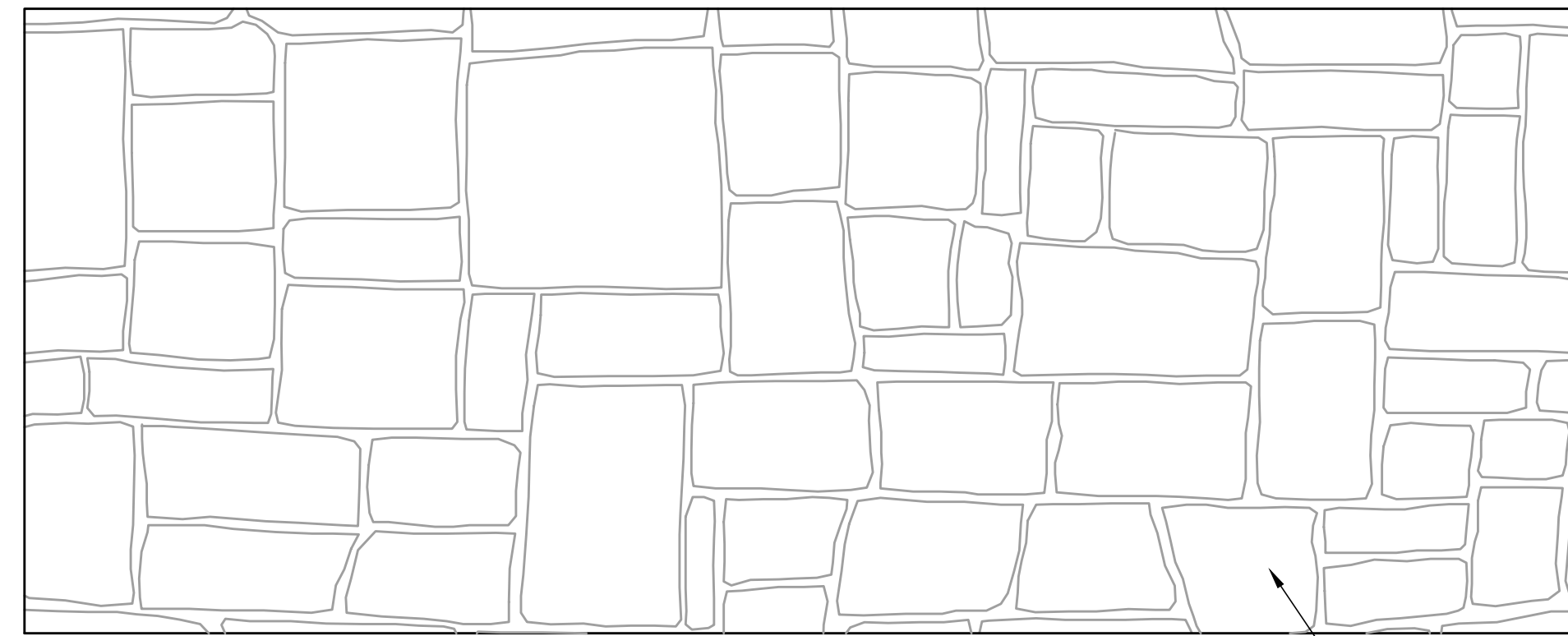
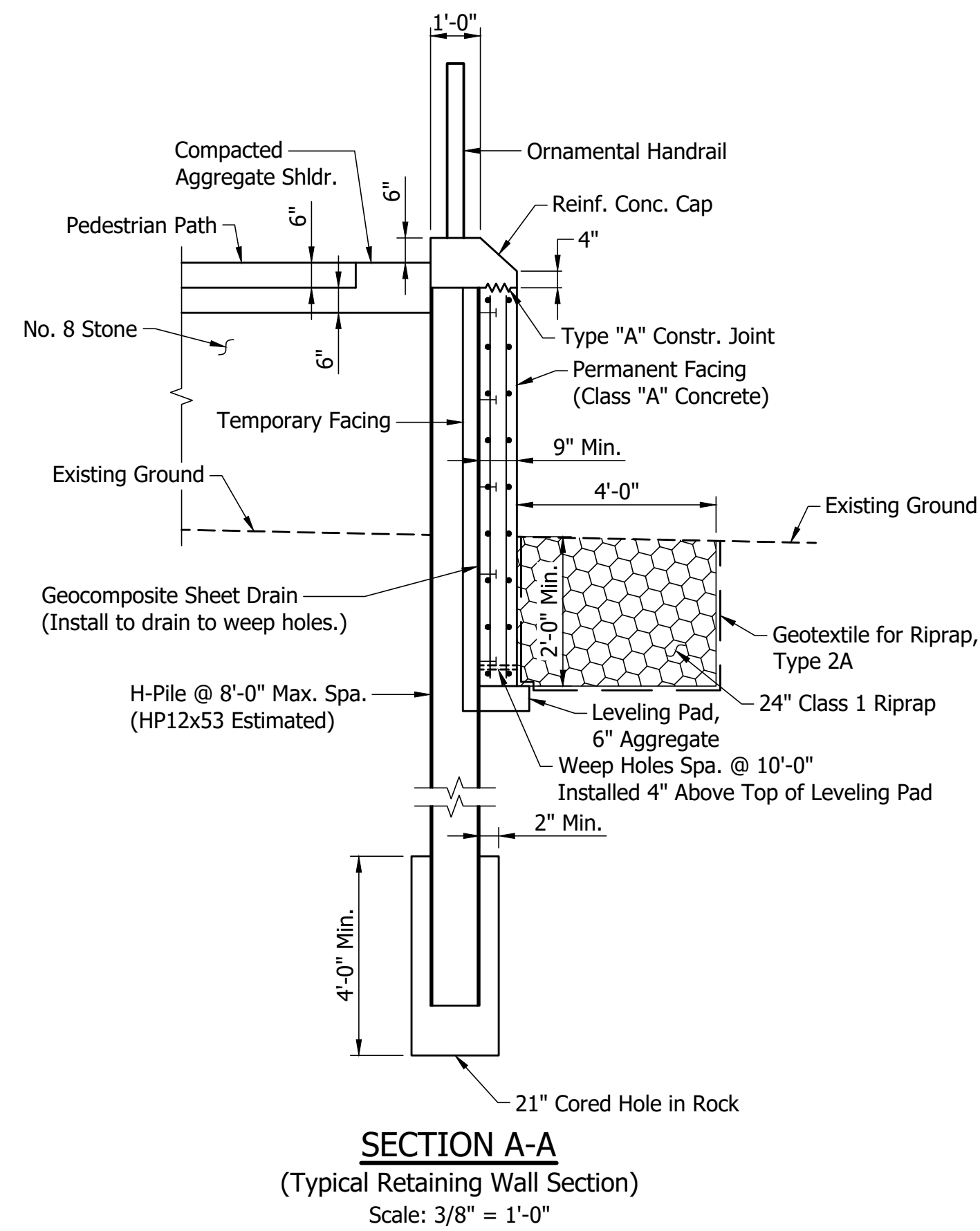
**RETAINING WALL NO.2 ELEVATION**  
 Scale: 3/32" = 1'-0"



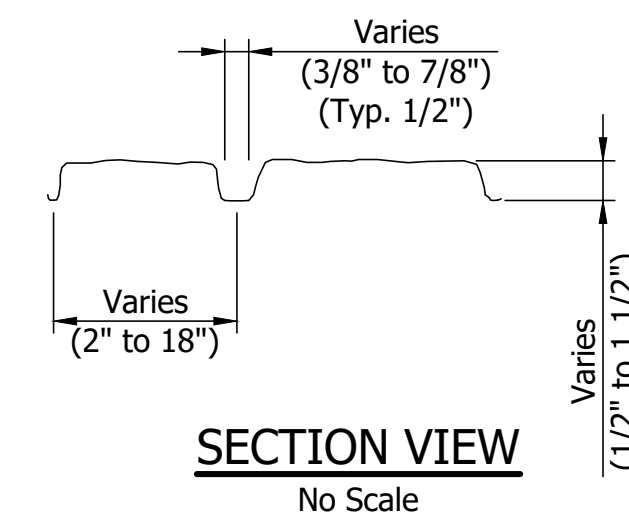
RECOMMENDED FOR APPROVAL *Ryan Wheeler* 4/12/2024  
 DESIGN ENGINEER DATE  
 DESIGNED: RTW DRAWN: MEN  
 CHECKED: AE CHECKED: RTW

INDIANA  
 DEPARTMENT OF TRANSPORTATION  
**RETAINING WALL DETAILS**

HORIZONTAL SCALE	AS NOTED	STRUCTURE FILE
VERTICAL SCALE	AS NOTED	DESIGNATION
DRAWING NO.	9	SHEETS of 42
CONTRACT	PROJECT 230005	



Stones are Pattern-Matched Top-to-Bottom & Side-to-Side  
 Stone Heights: Varies 2" to 18"  
 Stone Widths: Varies 2" to 18"  
 Stone Depths: Varies 1/2" to 1 1/2"  
 Grout Line Widths: Varies 3/8" to 7/8" - Typ. 1/2"

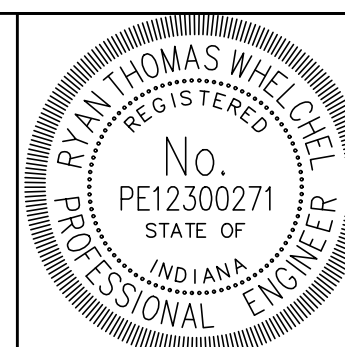


Depth Below Existing Ground Surface	Soil/Rock Type	Total Unit Weight (pcf)	Drained Parameters for Soil and Rock		Undrained Soil Parameters	Undrained Rock Parameters	
			Cohesion (psf)	Internal Friction Angle, ° (deg)	Undrained Shear Strength (ksf)	Uniaxial Compressive Strength (tsf)	RQD (%)
0 to 16 ft	Silty Clay Loam	120	n/a	23	n/a	n/a	n/a
16 to 21 ft	Sand	120	n/a	29	n/a	n/a	n/a
21 to 30 ft	Limestone	140	n/a	n/a	n/a	440	10

Depth Below Existing Ground Surface	Soil/Rock Type	Total Unit Weight (pcf)	Drained Parameters for Soil and Rock		Undrained Soil Parameters	Undrained Rock Parameters	
			Cohesion (psf)	Internal Friction Angle, ° (deg)	Undrained Shear Strength (ksf)	Uniaxial Compressive Strength (tsf)	RQD (%)
0 to 6 ft	Fill	125	n/a	30	n/a	n/a	n/a
6 to 10 ft	Silty Clay Loam	120	n/a	23	n/a	n/a	n/a
10 to 15 ft	Sand	120	n/a	32	n/a	n/a	n/a
15 to 30 ft	Limestone	140	n/a	n/a	n/a	440	10

	WALL NO.1	WALL NO.2
Retaining Wall	170 Sft	1640 Sft
Class 1 Riprap	24 Tons	276 Tons
Geotextile	58 Sys	591 Sys
Surface Seal	170 Sft	1640 Sft
Anti-Graffiti Coat	170 Sft	1640 Sft

Notes:  
 For Pedestrian Path Typical Sections, see Sht.3.  
 For additional Handrail Details, see Sht.14.



RECOMMENDED FOR APPROVAL *Ryan Wheelchel* 4/12/2024  
 DESIGN ENGINEER DATE  
 DESIGNED: RTW DRAWN: MEN  
 CHECKED: AE CHECKED: RTW

INDIANA  
 DEPARTMENT OF TRANSPORTATION

RETAINING WALLS DETAILS

HORIZONTAL SCALE	AS NOTED	STRUCTURE FILE
VERTICAL SCALE	AS NOTED	DESIGNATION
DRAWING NO.	10	SHEETS of 42
CONTRACT	230005	PROJECT